

Salusfin's intelligent heat control: Installation guide

You will find detailed instructions on our support pages also in English regarding all steps to be performed during installation. If you have any questions, then maybe "Frequently Asked" can help you find an answer. Under the support pages you will also find operating instructions for most of our products as well as manuals from our partners. Link to the support page: <https://salusfin.com/manual/?lang=en>

NOTE! The components are the property of the housing company and they must be left in the apartment if the current residents move out.

You will also find this document on our website under support and under the heading: "Installation guide for housing companies"

The installation takes place in two steps:

1. The manager / service company installs the product and thermostats in the apartment.
2. The occupants of the apartment then complete the configuration and activate the service

The manager / service company installs the product

1. The manager / service company installs the product and replaces the thermostats in the apartment with Danfoss Living Connect (except in wet areas).
2. The thermostats are set to a standard temperature of 21 degrees.
3. Two temperature sensors are installed, one that accurately measures the temperature of the heating water and another is to give an image of the indoor temperature.
4. The manager / service company connects the Gateway to a free outlet.

The apartment owner completes the installation

1. Follow the installation wizard to set up Gwn.
2. Navigate through the browser to the Salusfin Control Center at <https://control.salusfin.com>
3. Register to create a username and password by selecting "Register" from the menu, follow the process to the end (you need a valid email address)
4. Log in with your new user account
5. Fill in the necessary information such as the name of the house / apartment, type of place and country.

6. The system then asks for the apartment's specific energy data such as energy price and estimated consumption. You can skip this step as it is not mandatory.

Installation of the temperature sensors

1. Select "Install" from the menu in the Control Center and then select "Other kits" in the menu.
2. Enter the PIN code (found on a sticker on the Gateway and follow the guide).

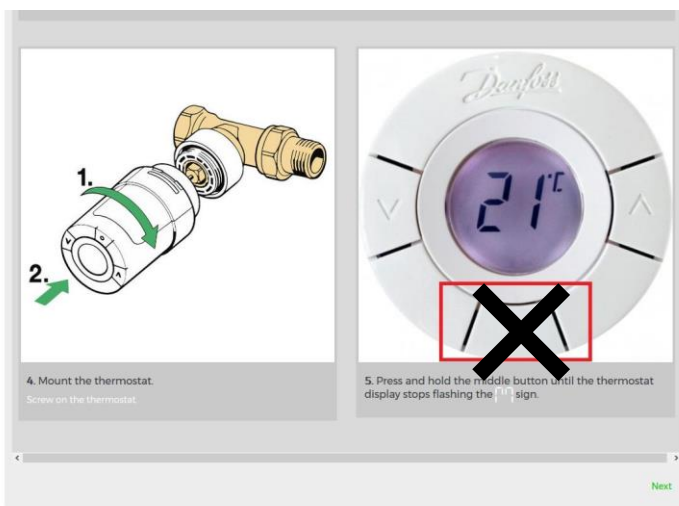
Feel free to choose a name for the rooms that is descriptive, for example living room, bedroom or dining room, etc. and name the temperature sensor in a corresponding way, e.g. District heating and indoor temperature. The temperature sensor should be placed centrally in the apartment and at a height of 150 cm from the floor.

Installation of thermostats

Select "Install" from the menu in the Control Center and under "Add-Ons" search for and "Thermostat SF-500-EU" in the list and click "Next" and follow the guide.

Observe that!

The last step in the installation wizard when it asks you to hold down the middle button should be skipped. The reason that this step should be avoided is that your Manager or your service company has already installed the thermostats to the radiators. Click on "Next" to complete the configuration and continue with the next thermostat or component can be installed.



Install the mobile application

To get the most out of your product from Salusfin, it is now time to download and install the "Salusfin App for your Android phone or insert iPhone. By scanning the QR codes below, you can easily access the Google Play Store or Apple's APPStore.



Android



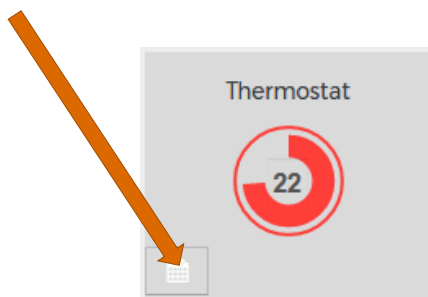
iOS

After installing the Salusfin App, just log in with your account and can choose your PIN code e.g. 4-6 digits. The PIN code is added to lock the App after a certain time to protect your information and account from unauthorized persons.

Create a heating profile for your home in the Control Center

Log in to your <https://control.salusfin.com/> username and select the "Control" or "Control" section from the menu on the left. Under the Control / Control page, all installed components are visible in so-called. tiles.

For the Thermostat it is possible to set schedules that the component will follow and you can decide which temperature is the default if nothing else is specified.



With the heating profile and the mobile application, you can control the temperature of the apartment remotely.

You can set and change the default time, adjust the temperature per room, copy the heating profile from one room to another, set the holiday period and the start and end times of the holiday period.