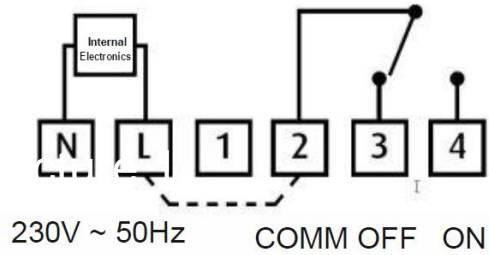
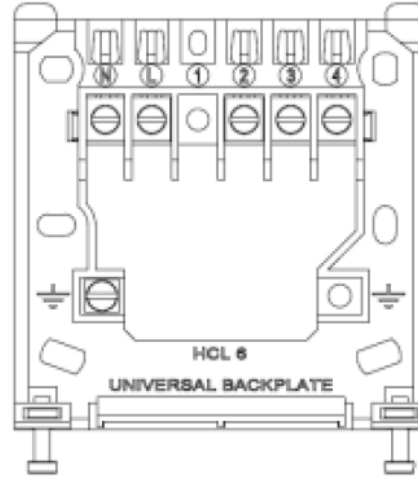


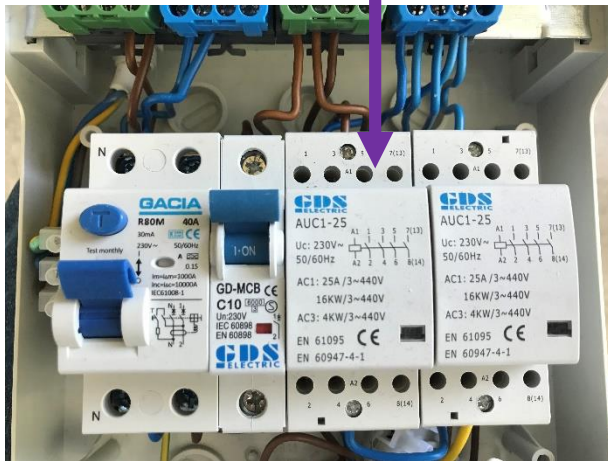
Relay controlling contactor



Connector no 4 is used to control the contactor in picture 2 below.



Picture 3



Picture 2



Picture 4

Power Supply
Contact type
Wiring configuration
Contact voltage rating
Contact current rating
Impulse rating
Transmitter frequency
Receiver category
Class

230v 50Hz
Micro disconnection
Voltage free c/o (SPDT)
230v ac 50Hz (30v dc)
3A (1A inductive)
Category II – 2500v
868.42MHz
Category 3
Power Class B

Standards

EN 60730-2-7
ETSI EN 300 220-2 / ETSI EN 301

489-3

Dimensions
Enclosure

86 x 86 x 36.25mm
Flame retardant thermoplastic

Ingress protection
Pollution degree
Insulation class
Software class
Control type

IP30
Degree 2
Class II
A
Type 1B
Electronic control

Temperature range
Ball pressure temperature
Purpose of control

0-40°C
75°C
1 channel RF receiver switch