



Standalone Installation
User Guide

Table of Contents

Salusfin Door/Window Sensor Features.....	3
Door Sensor SF-9400 Initial Setup.....	3
Door Sensor Installation start page	4
Door Sensor SF-9400 mounting instructions.....	6
Salusfin Flood Sensor Features.....	8
Flood Sensor SF-9760 Initial Set up	8
Flood Sensor Installation start page.....	9
Flood Sensor SF-9760 Mounting Instruction	10
Salusfin Motion Sensor Features.....	12
Motion Sensor 2in1 SF-9250 Initial Setup.....	13
Motion Sensor 2in1 SF-9250 Installation start page.....	13
Motion Sensor 2in1 SF-9250 mounting instructions.....	15
Salusfin Smart Plug Features.....	17
Smart Plug SF-9300 Installation	17
Salusfin Smoke Detector Features.....	21
Smoke Detector SF-9740 Initial Set up	21
Smoke Detector Installation start page.....	22
Smoke Detector SF-9740 mounting instructions.....	23
Salusfin Thermostat Features	26
Thermostat Installation start page	27
Mounting Smart Thermostat to Radiator	29
Control, Schedule Thermostat	31
Salusfin Camera Features	33
Camera Installation – Registering camera to the Wi-Fi Network.....	34



Door / Window Sensor |SF 9400

User Guide



This user guide will ensure that you will have your Door Sensor | SF-9400 set up.

Please ensure that you have configured the Gateway before installing the components.

For Gateway installation please refer to Salusfin Gateway installation User Guide.

Salusfin Door/Window Sensor Features

Magnetic door sensor reports open / closed status providing high security.

Easily mounted on doors, windows, garage gates and roller blinds.

Battery powered (battery level is reported on mobile client)

Sensor can be armed from Mobile APP. Upon status change (Open or close), a notification is being sent to the Mobile APP.

The sensor LED indicator will blink when status changes.

The sensor will automatically self-arm after a period of 10min from the last event if the user does not disarm the house. If the house is disarmed and armed again, the 10min cool down period is avoided.

Please note that the sensor will be in sleep mode most of the time until an event occurs to optimize battery life.

Door Sensor | SF-9400 Initial Setup

Open the box that has Door Sensor | SF-9400 printed on it.

Take out all components of the box and place them in front of you.

Unscrew the screw that keeps the rear cover in place.

Slide the rear cover down.

Insert a CR123A battery into the battery compartment

[illegible]

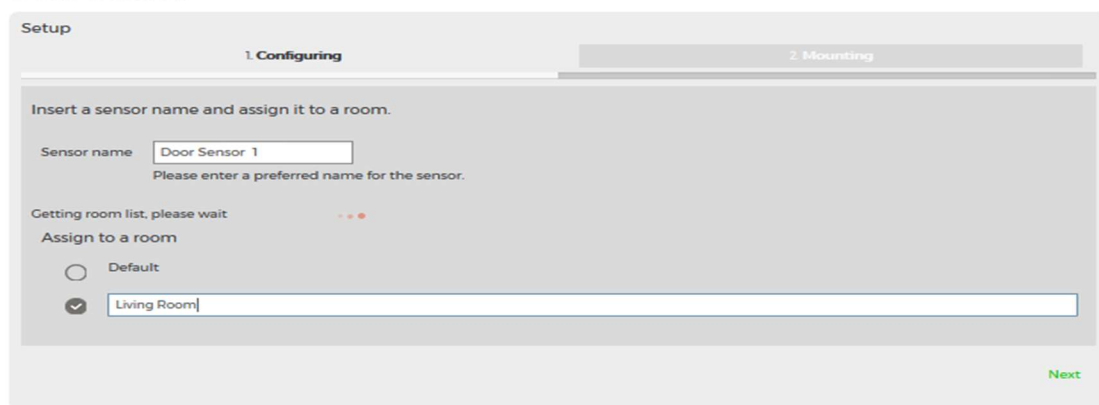
Follow the instructions:

Make sure that you have inserted the battery into the component before clicking "Start Pairing".

Triple click the pairing button to introduce the component to your gateway.

Note! If the sensor is not recognized within two minutes go back to installation page and try again.

Door Sensor



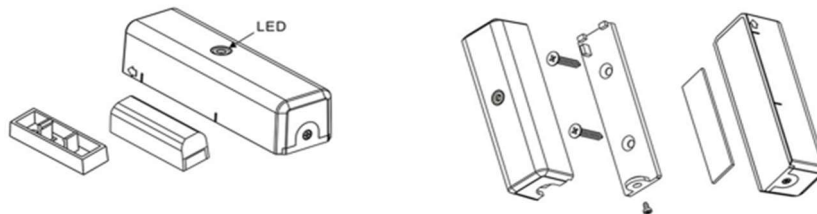
The System will ask you to provide a name to the sensor. You also need to assign it to a room or create a new room.

Click "Next" to proceed.

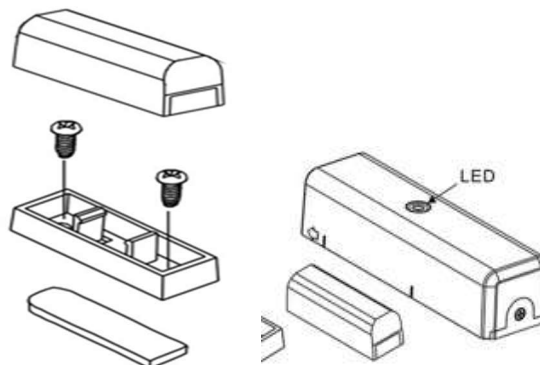


Door Sensor | SF-9400 mounting instructions

Please use the doubled sided tape or the screws included in the package to prepare the component to be mounted to the desired location



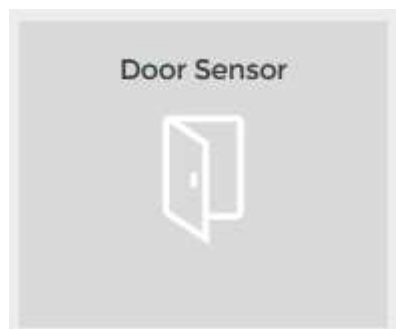
Ensure that the sensor is placed as close to the edge of the opening as possible.



Note! Check that the magnet connects to the marked area on the sensor and the distance is 2-4 mm.

Mount the magnet close to the already installed sensor

Door Sensor | SF-9400 is now successfully installed. You could find the Door sensor icon under Control menu.





Flood Sensor | SF 9760

User Guide



This user guide will ensure that you will have your Flood Sensor | SF-9760 set up.

Please ensure that you have configured the Gateway to your network before installing the components. For Gateway Installation, refer to Salusfin Gateway installation Manual.

Salusfin Flood Sensor Features

Flood sensor is capable of reporting water leakage.

Battery powered (battery level is reported on mobile APP)

A notification is being sent to the Mobile APP, in case of water leak. The sensor LED indicator will blink upon status change.

Please note that the sensor will be in sleep mode till an event occurs to optimize battery life.

The sensor will automatically self-arm after a period of 3 min from the last action.

Flood Sensor | SF-9760 Initial Set up

Open the box that got Flood Sensor | SF-9760 printed on it.

Take out all components of the box and place them in front of you

Unscrew the screw that keeps the rear cover in place. Slide the rear cover down.

Insert a CR123A battery into the battery compartment

Navigate to Salusfin Home manger in your browser:

<https://control.salusfin.com>

Enter your login credentials used for Gateway Installation and click "Sign In"

WELCOME TO THE SALUSFIN LOGIN PAGE



Login to your account

E-mail


Password

[Reset Password](#)

Flood Sensor Installation start page

Choose Install option and select "Add Ons".

Click on “Flood Sensor | SF-9760 to install the Sensor.



Plans 5

Download 0
Add-ons 12
Customization 28
Control 0
Install 0
Settings 0
Buy Out
Version 1.7

Select your product.

Please install kits first.

Kits

- Electricity Starter Kit | SP-0000
- Electricity Sourcing Kit | SP-0001
- Electricity Control Kit | SP-0002
- Heating Control Kit | SP-0003
- Gas Monitor Kit | SP-0004
- Other kit

Please select one of the kits from the list.

Please install the gateway first (Gateway Lite, Gateway Pro, Gateway C360).


Add-Ons

- Gateway Lite | SP-930
- Gateway Pro | SP-931
- Gateway C360 | SP-932
- Power Reader | SP-9021
- Gas Reader | SP-9102
- Smart Plug | SP-9300
- Motion Sensor 4in1 | SP-9700
- Door Sensor 4in1 | SP-9702
- Smoke Detector | SP-9704
- Flood Sensor | SP-9706
- Thermostat | SP-9500
- Door Sensor | SP-9403
- Relion Sensor 2in1 | SP-9505
- Beam | SP-9506
- CO Detector | SP-9704
- Camera Indoor | SP-91
- Outdoor Switch | SP-5300
- Heavy Duty Switch | SP-5800
- In-wall Switch | SP-4900
- Bolter Thermostat | SP-4022
- Bolter Relay | SP-4123

Please select one of the add-ons from the list.

Add-Ons

- Gateway Lite | SP-930
- Gateway Pro | SP-931
- Gateway C360 | SP-932
- Power Reader | SP-9021
- Gas Reader | SP-9102
- Smart Plug | SP-9300
- Motion Sensor 4in1 | SP-9700
- Door Sensor 4in1 | SP-9702
- Smoke Detector | SP-9704
- Flood Sensor | SP-9706**
- Thermostat | SP-9500
- Door Sensor | SP-9403
- Motion Sensor 2in1 | SP-9505
- Siren | SP-9100
- CO Detector | SP-9705
- Camera Indoor | SP-91
- Outdoor Switch | SP-5300
- Heavy Duty Switch | SP-5800
- In-wall Switch | SP-4970
- Bolter Thermostat | SP-4022
- Bolter Relay | SP-4123




[Download Guide](#)
[Next](#)

Follow the instructions:

Make sure you have inserted the battery into the battery compartment before clicking "Start Pairing".

Triple click the pairing button to introduce the component to your gateway.

Note! If the sensor is not recognized within two minutes go back to installation page and try again.



ALUSION
SOLUTIONS

Pair add-on device with gateway

nextion quick help

Registration

Authentication

Consumption

Control


Install

Support

Open Chat


Version 1.0.0

Flood Sensor (SF-97600)



Your gateway: 1459ad1010000


The first step for installing an add-on device is pairing it with a gateway. Please follow the steps below in order to pair it with any one of your gateways. It is recommended that, during the pairing process, the device be at a maximum distance of 1 meter from any of your gateways.



1. Insert the CR14250 battery into the battery compartment.

Before using the batteries are placed correctly and the device will not activate. To check out pairing the device with your gateway, first pressing the button (marked) button.

Start Pairing



2. Press the program switch for at least 1 second.

While gateway can not find the sensor within 2 minutes, please repeat this step.

3. Once the device is successfully paired, press the NEXT button to continue the installation.

The system will ask you to provide a name to the sensor.
You also need to assign it to a room or create a new room.
Click "Next" to proceed.

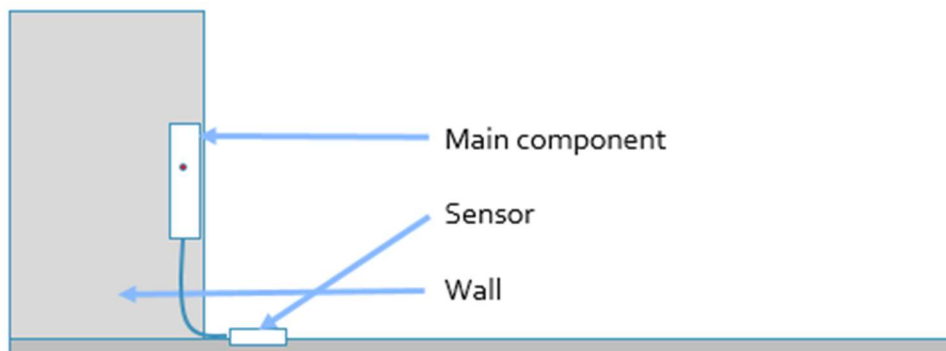


Flood Sensor | SF-9760 Mounting Instruction

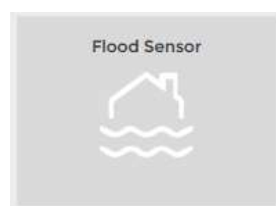
Fix the sensor head on location you want, using the screws or adhesive tape to install it.

Slide back the rear cover and screw fastening with the front cover, the LED should go off.

Put the main component at higher place for better RF range, and the use the adhesive tape to fix the main component to the wall.



Flood Sensor | SF-9760 is now successfully installed. You can confirm completed installation by checking Flood Sensor icon under Control Menu.



Next you can install Salusfin mobile client. You can see / control all components with your mobile phone (Android/iOS)



Motion Sensor | SF 9250
Installation User Guide



This user guide will ensure that you will have your Motion Sensor | SF-9250 installation set up.

Please Ensure that you have configured the Gateway before installing the components.

For Gateway installation, refer to Salusfin Gateway installation Manual.

Salusfin Motion Sensor Features

Motion sensor is capable of reporting movement and temperature.

Battery powered (battery level is reported on mobile APP)

Sensor can be armed from Mobile APP and upon status change (movement) a notification is being sent to the Mobile APP. The sensor LED indicator will blink upon status change.

Please note that the sensor will be in sleep mode till an event occurs to optimize battery life.

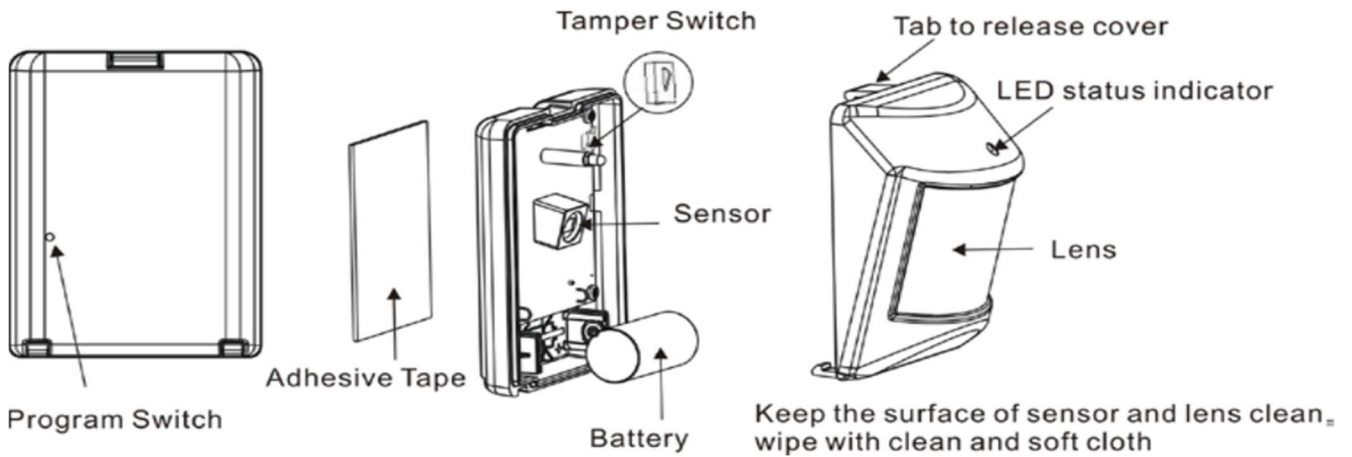
The sensor will automatically self-arm after a period of 3 min from the last action. The sensor always requires a period of 3 min to report movement again.



App Tile



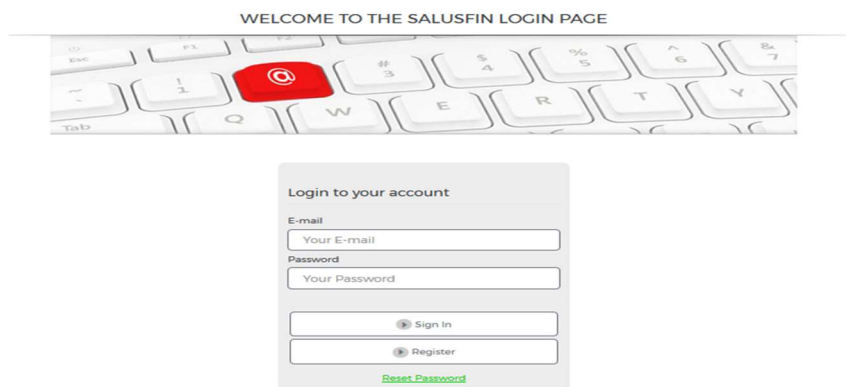
Web Portal Tile



Navigate to Salusfin Control Centre in your browser:

<https://control.salusfin.com>

Enter your login credentials used for Gateway Installation and click “Sign In”



Motion Sensor 2in1 | SF-9250 Installation start page

Choose Install, Select “Add-ons”

Click on “Motion Sensor” | SF-9250 from the Add on list



Follow the instructions:

Make sure that you have inserted the battery into the component before clicking "Start Pairing".

Next click the "Start Pairing" button (shown in the picture) to introduce the component to your Salusfin solution.

Triple click the button in "Motion Sensor" to introduce the component to your gateway.

Click Next to continue the installation wizard

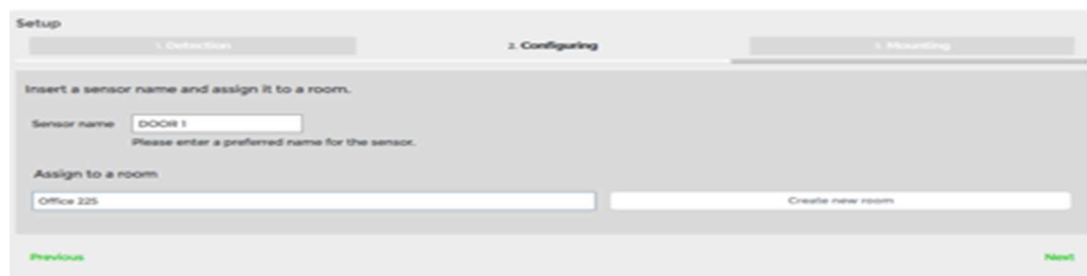
Note! If the sensor is not recognized within two minutes go back to installation page and try again.



The system will ask you to provide a name to the sensor.

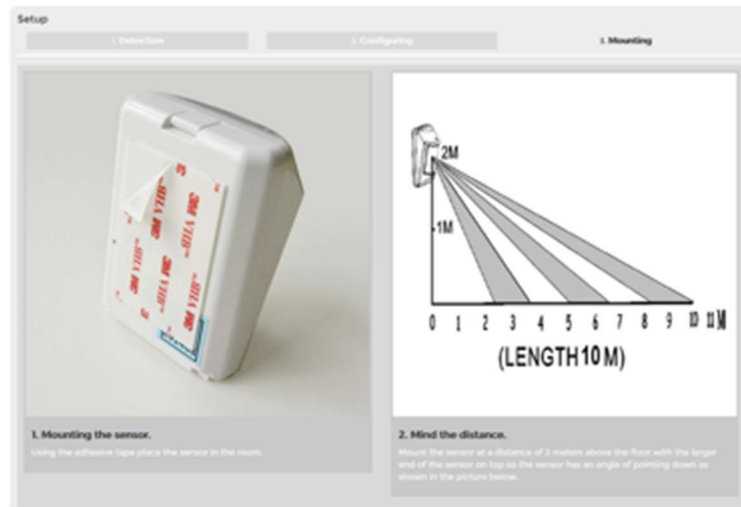
You also need to assign it to a room or create a new room.

Click "Next" to proceed.



Motion Sensor 2in1 | SF-9250 mounting instructions

Please use the double sided tape or the screw pair included in the package to mount the component to the desired location.



In the picture the Motion Sensor 2in1 | SF-9250 is mounted above the entrance door to monitor movement.



Motion Sensor 2in1 | SF-9250 is now successfully installed.





Smart Plug | SF 9300
Installation User Guide



This user guide will ensure that you will have your Smart Plug | SF-9300 set up.

Salusfin Smart Plug Features

Smart plug provides capability to turn On / Off the devices plugged in and reports electricity consumption of devices.



Please Ensure that you have configured the Gateway before installing the components.


For gateway installation please refer to Salusfin Gateway installation Manual.

Navigate to Salusfin Home manager in your browser:

<https://control.salusfin.com>

Enter your login credentials used for Gateway Installation and click "Sign In"

WELCOME TO THE SALUSFIN LOGIN PAGE



Login to your account

E-mail

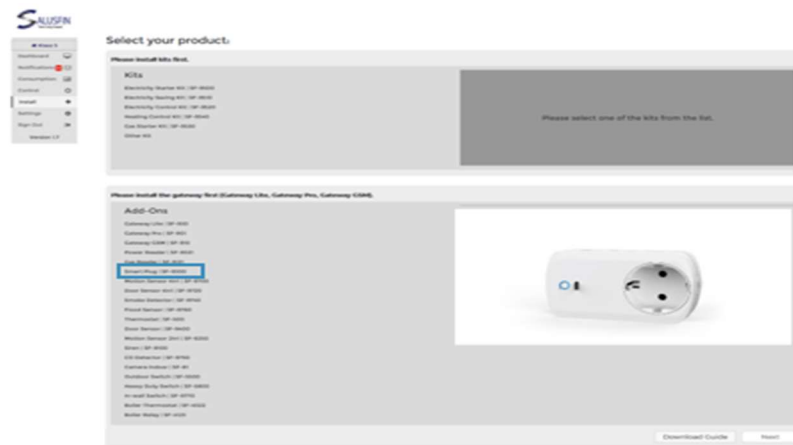
Password

[Reset Password](#)

Smart Plug | SF-9300 Installation

Choose Install and select from Add On.

Click on "Smart Plug from Add on list | SF-9300 to install.



Now Click "Start Pairing".

Power up the smart plug and click the pairing button thrice to introduce the component to your gateway.

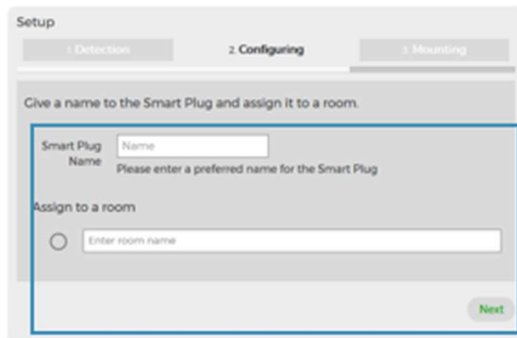


Note! If the sensor is not recognized within two minutes go back to installation page and try again.

Provide a name to the sensor.

You also need to assign it to a room or create a new room

Click "Next" to proceed



Setup

1 Detection 2 Configuring 3 Mounting

Give a name to the Smart Plug and assign it to a room.

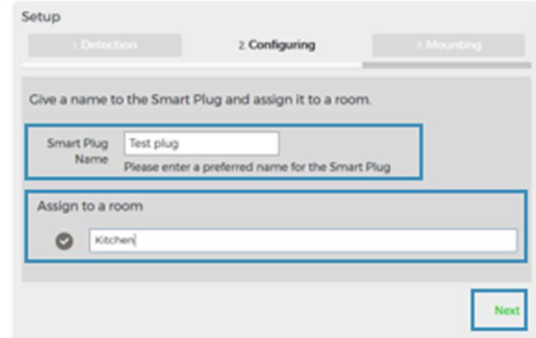
Smart Plug Name

Please enter a preferred name for the Smart Plug

Assign to a room

☐ Enter room name

Next



Setup

1 Detection 2 Configuring 3 Mounting

Give a name to the Smart Plug and assign it to a room.

Smart Plug Name

Please enter a preferred name for the Smart Plug

Assign to a room

☒ Kitchen

Next



You are done!

Next you can install Salusfin mobile client. You can see / control all components with your mobile phone (Android/iOS)



Smoke Detector | SF-9740
Installation User Guide



This user guide will ensure that you will have your Flood Sensor | SF-9760 set up.

Salusfin Smoke Detector Features

Photoelectric smoke sensor reporting smoke.

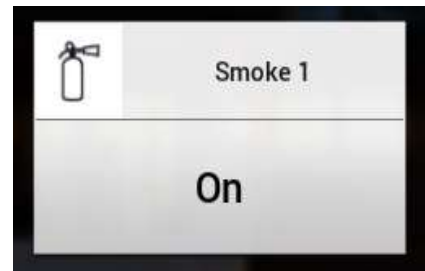
Battery powered (battery level is reported in mobile APP)

In case of alarm the mobile app will give notice regardless of house status (locked or not locked)

Soon as the detector detects any smoke, a notification is being sent to the Mobile APP. The Sensor is always armed to provide maximum safety.



Picture 1: Smoke Detector

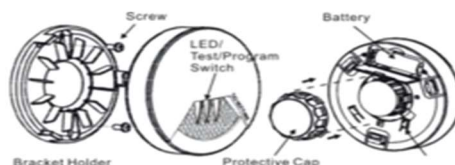


Smoke Detector | SF-9740 Initial Set up

Open the box that got Smoke Detector | SF-9740 printed on it.

Take out all components of the box and place them in front of you

Remove the bracket from the detector by rotating it counter-clockwise.



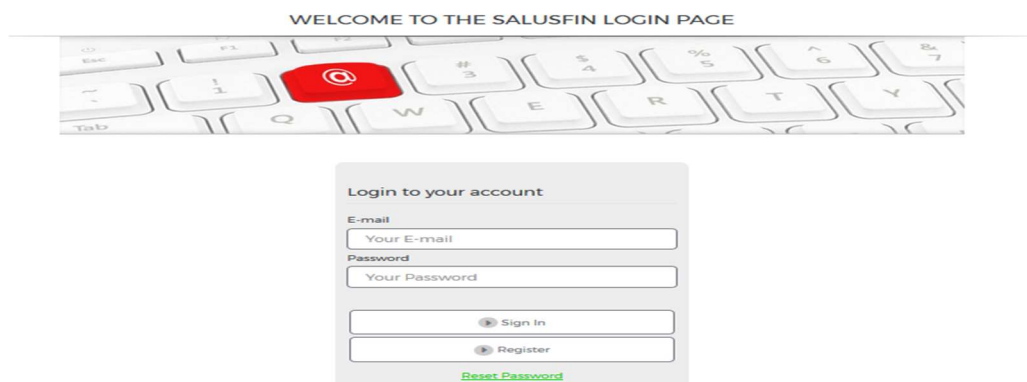
Please ensure that you have configured the Gateway before installing the components.

For Gateway Installation, refer to Salusfin Gateway installation Manual.

Navigate to Salusfin Home manager in your browser:

<https://control.salusfin.com>

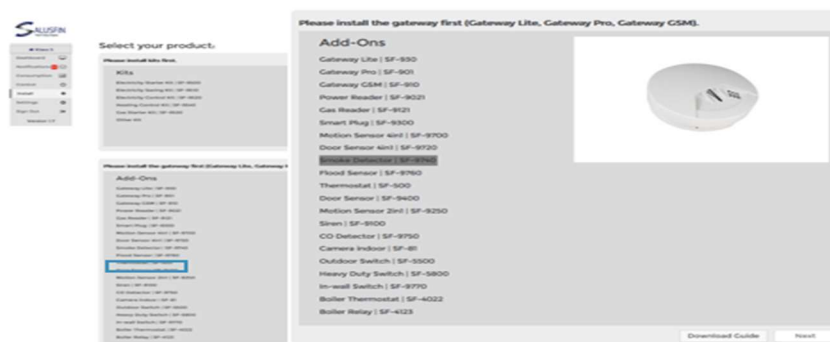
Enter your login credentials used for Gateway Installation and click "Sign In"



Smoke Detector Installation start page

Choose Install option.

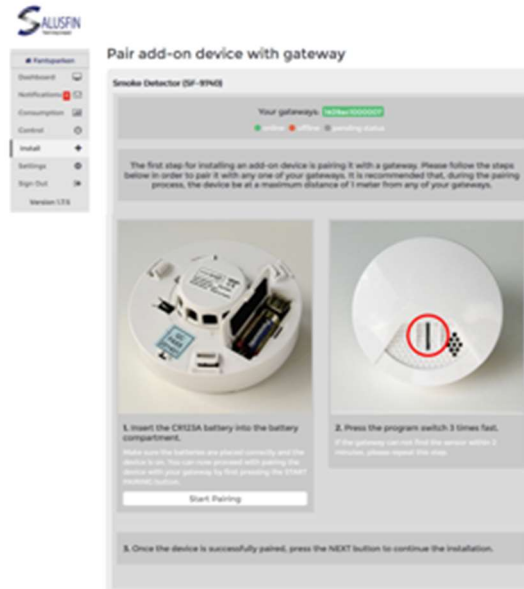
Click on Smoke Detector | SF-9740 to install the Sensor.



Follow the instructions:

Open the battery cover to insert a CR123A battery into the battery compartment, and then replace the cover.

Fix the detector with bracket by rotating it clockwise. Please note that the Smoke Detector will give high alarm noise otherwise.



After you have inserted the battery into the component click "Start Pairing" button.

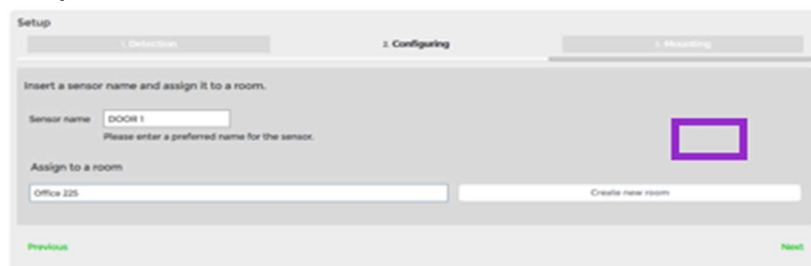
Next you need to triple click the pairing button (shown in the picture to introduce the component to your Salusfin solution.

Note! If the sensor is not recognized within two minutes go back to installation page and try again.

Provide a name to the sensor.

You also need to assign it to a room or create a new room.

Click "Next" to proceed.



Smoke Detector | SF-9740 mounting instructions

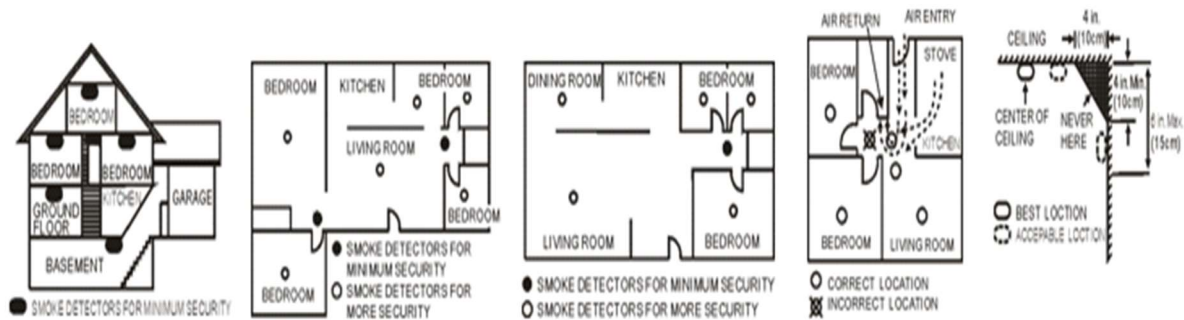
Remove the battery temporarily from the Smoke Detector

Remove the bracket from the detector by rotating it counter-clockwise.

Place the bracket where you are going to install the detector. In each of key hole slots, draw a mark to locate plastic anchor and screw.

Using a 3/16-inch (5mm) drill bit, drills two holes at the marks and insert plastic anchor, and attached the bracket by using the screws.

Smoke Detector location suggestion below.



Smoke Detector | SF-9740 is now successfully installed.



You are done!

Next you can install Salusfin mobile client. You can see / control all components with your mobile phone (Android/iOS)



Thermostat | SF-500-EU
Installation User Guide



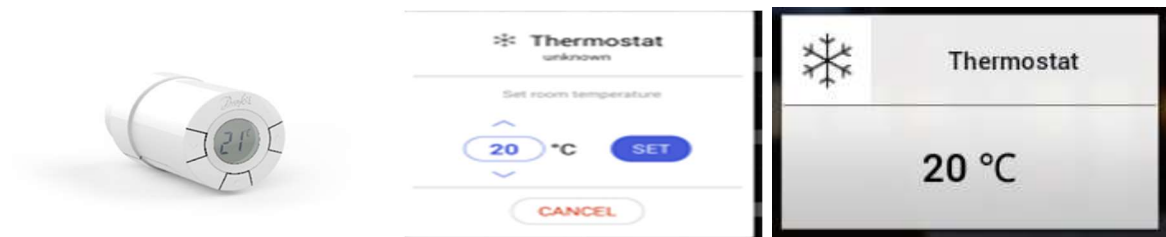
This user guide will ensure that you will have your Door Sensor | SF-9400 set up.

Salusfin Thermostat Features

Electronic wireless radiator thermostat which provides temperature and comfort control.

Battery powered (battery level is reported on mobile APP).

Temperature can be controlled and scheduled from Control Centre or Mobile APP.



Picture 1: Thermostat

Please ensure that you have configured the gateway to your network before installing the components.

For gateway installation please refer to Salusfin Gateway installation Manual.

Navigate to Salusfin Home manager in your browser:

<https://control.salusfin.com>

Enter your login credentials used for Gateway Installation and click "Sign In"

WELCOME TO THE SALUSFIN LOGIN PAGE



Login to your account

E-mail

Password

Sign In

Register

[Reset Password](#)

Thermostat Installation start page

Choose Install option and Select "Add On"

Click "Thermostat | SF-500 from the Add On list to install the Thermostat

Click Next to proceed

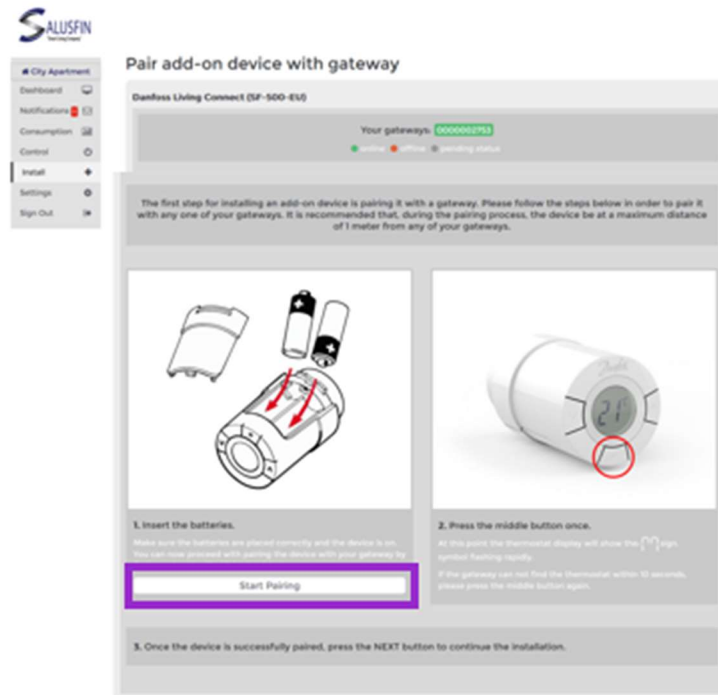


Follow the instructions:

Open the battery cover to insert a CR123A battery into the battery compartment, and then replace the cover (pay attention on the battery direction in the compartment)

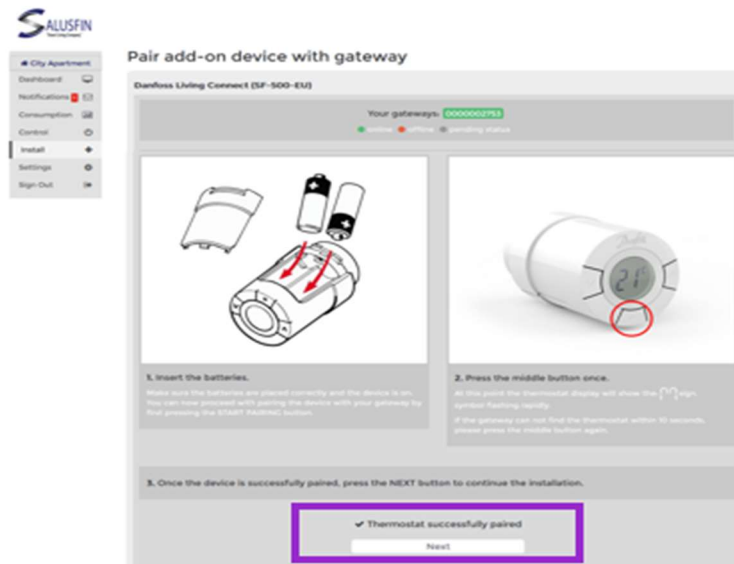
Press the Middle button once.

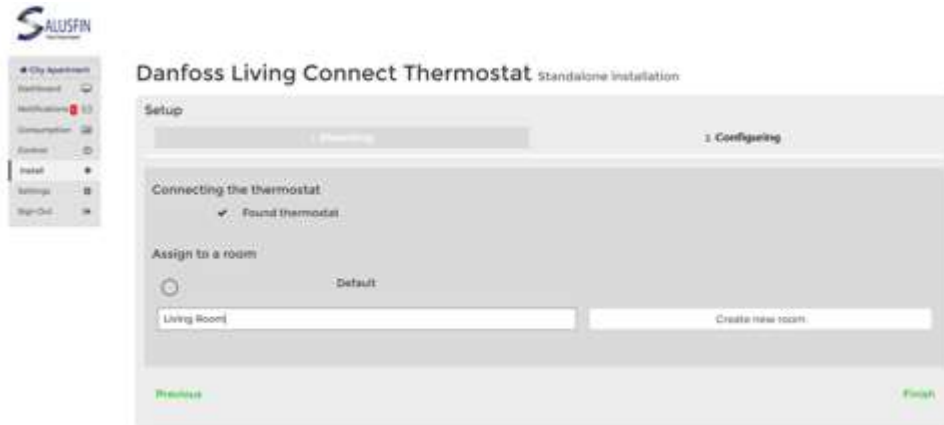
Click "Start Paring".



Check if the Thermostat is paired. Click Next to proceed.

Note! If the sensor is not recognized within two minutes go back to installation page and try again.





Assign a name to the room that you're installing the thermostat to.

You can select from existing rooms or create a new room.

Click Finish when done.

If you want to install additional thermostats go back to Install menu and repeat the steps for installing Danfoss thermostats.

Mounting Smart Thermostat to Radiator

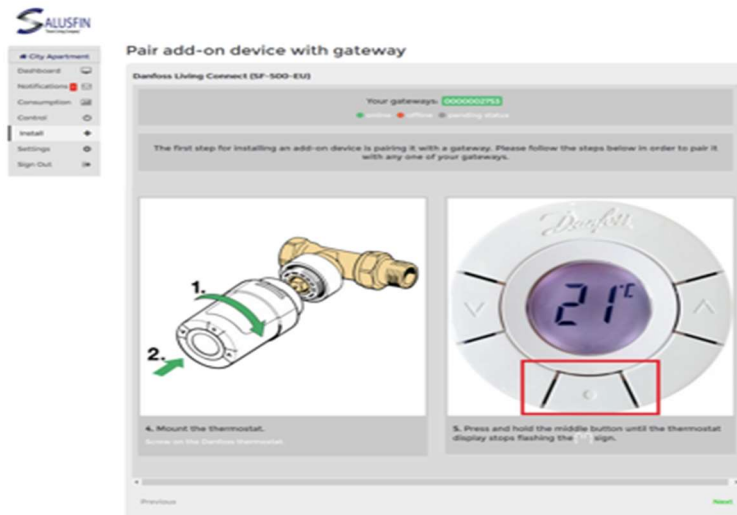
Remove the old thermostat.

If it is a type RA thermostat, you will find a small screw on the side - loosen it with the Allen key (included in the box) to remove the thermostat.

If it is a type K thermostat, remove it by firmly twisting the innermost part (close to the pipe) counter-clockwise.

In case of installation problems (e.g. very old heater valve) you need to have the Danfoss adapter valve kit.

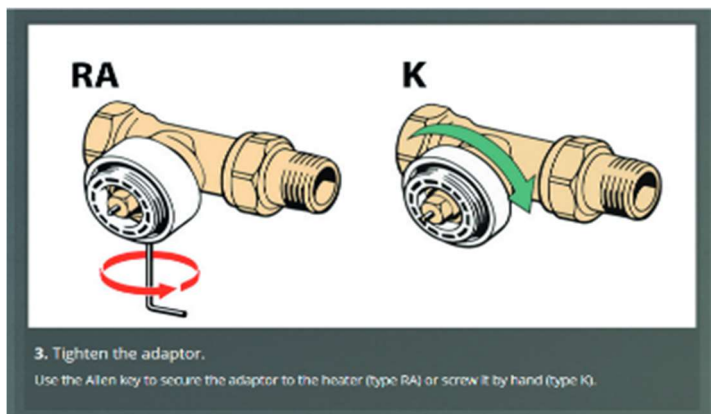
Salusfin has an adapter for Oras Stabila valves.



(Attach and tighten the Thermostat to the adapter.)

Mount the thermostat to the Radiator, rotating clockwise.

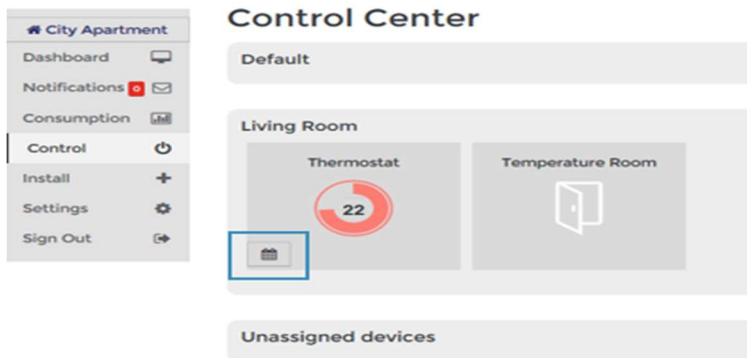
Press hold the middle button until the thermostat display stops flashing.



On the RA type, tighten the small screw.

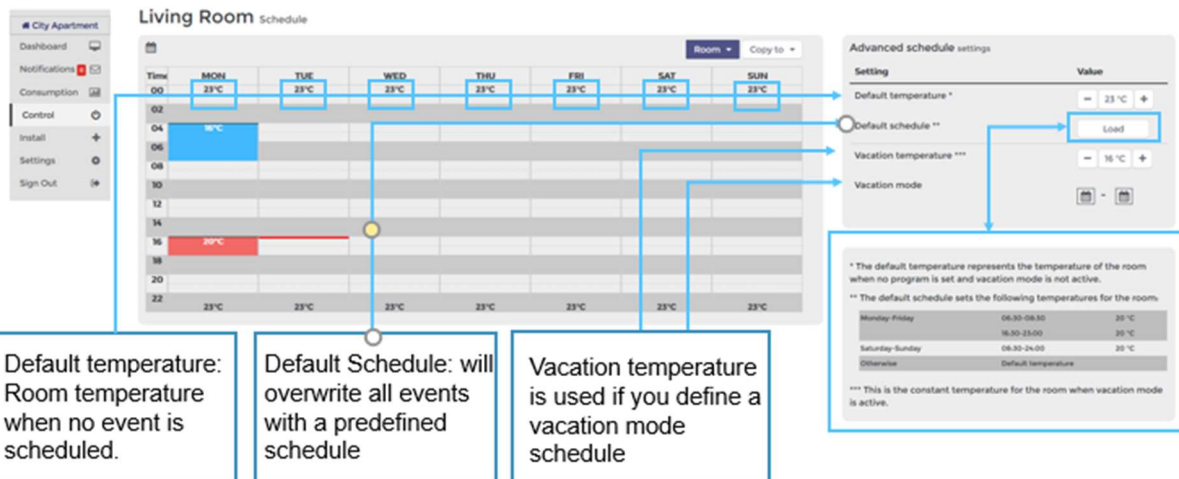
The K type, adapter is tightened onto the radiator.

Control, Schedule Thermostat



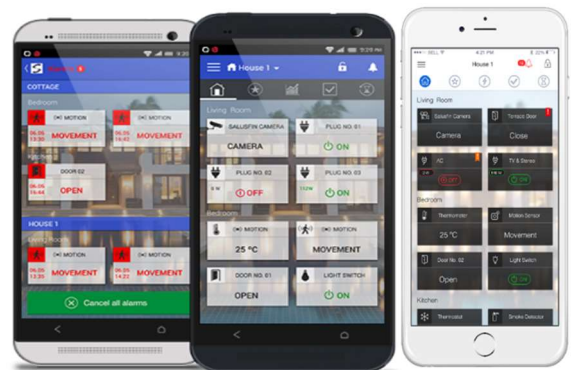
To set room temperature you can move the circle around the temperature number to adjust the set point.

In case you have need to use the scheduler then click on the Calendar icon



You are done!

Next you can install Salusfin mobile client. You can see / control all components with your mobile phone (Android/iOS)





Camera | SF-81
Installation User Guide



This user guide will ensure that you will have your Camera | SF-81is set up.

Salusfin Camera Features

- HD Quality - 720p Resolution
- Water and dust proof (IP66)
- Day/Night Surveillance - 25m night vision distance
- Operating Temperature: -10°C to 50°C
- Encrypted stream.

Please ensure that you have configured the gateway to your network before installing the components.


For gateway installation, refer to Salusfin Gateway installation Manual.

Navigate to Salusfin Home manager in your browser:

<https://control.salusfin.com>

Enter your existing login credentials used for Gateway Installation and click "Sign In"

WELCOME TO THE SALUSFIN LOGIN PAGE



Login to your account

E-mail

Password

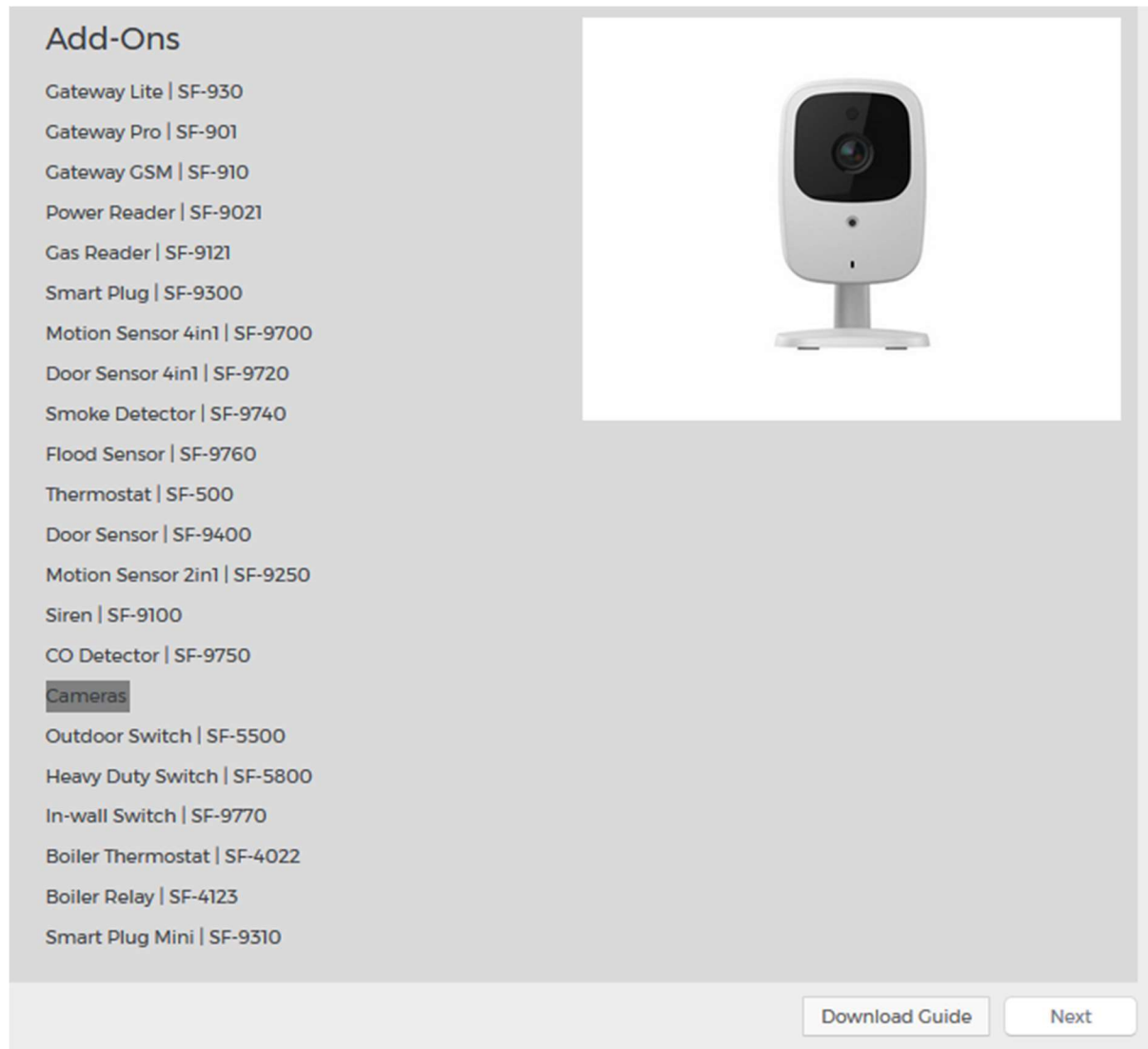
[Reset Password](#)

Camera Installation – Registering camera to the Wi-Fi Network.

Choose “Install” option from the menu and choose “Add Ons”.

Click on Camera to pair it.

Select “Next” to proceed

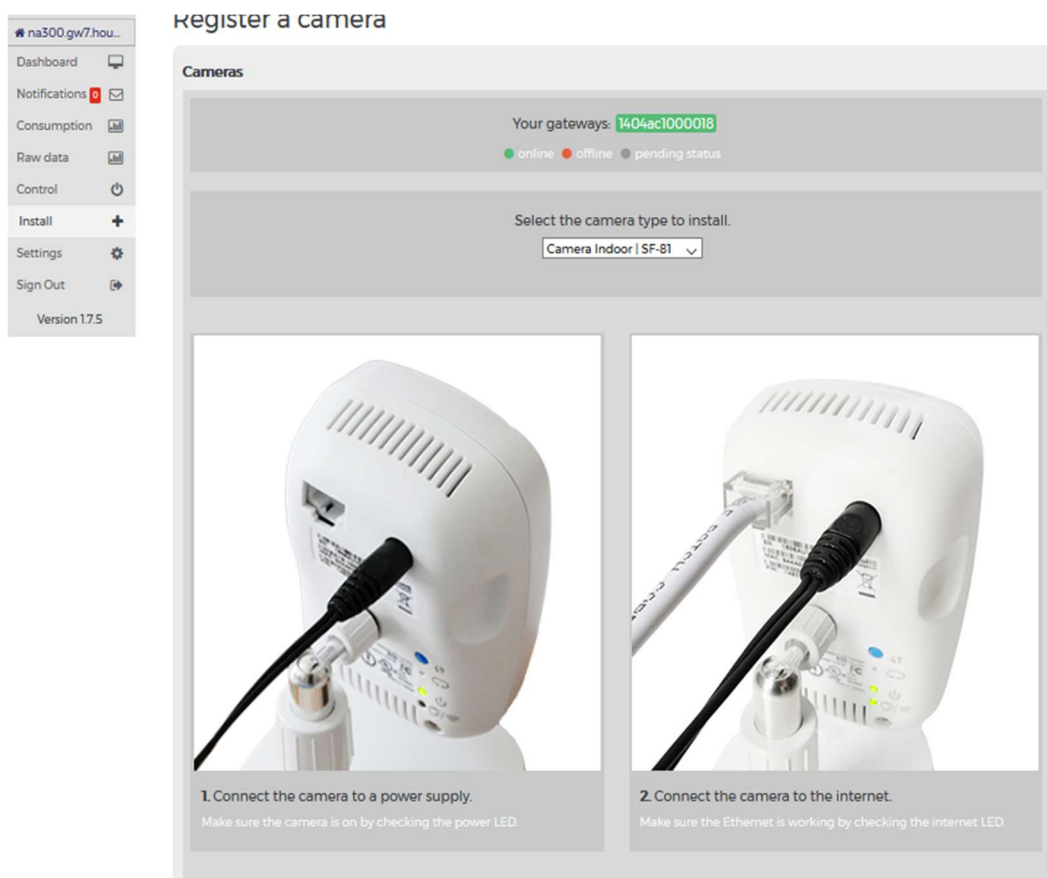


Follow the instructions:

Power up the camera, ensure that the camera is ON by checking the LED on the camera.

Connect the Camera to the Internet with the Ethernet cable. The Internet LED works when connected to camera.

Choose the camera type to proceed with installation.



Assign a name to the Camera.

Provide the Mac address and the Pin code and click "Next".

Mac address and Pin code are found in the camera label.

1. Connect the camera to a power supply.
Make sure the camera is on by checking the power LED.

2. Connect the camera to the internet.
Make sure the Ethernet is working by checking the internet LED.

Enter a name for the camera

Enter camera MAC address

Enter camera pin code

Next

Assign the camera to an existing Room or create a new room.

na300.gw7.hou...
Dashboard
Notifications
Consumption
Raw data
Control
Install
Settings
Sign Out
Version 1.7.5

Register a camera

Cameras

Your gateways: 1404ac1000018
● online ● offline ● pending status

Assign to a room

<input type="radio"/>	Kitchen	Gateway: 1404ac1000018
<input checked="" type="radio"/>	Living room	Gateway: 1404ac1000018
<input type="radio"/>	Room1	Gateway: 1404ac1000018
<input type="radio"/>	Default	Gateway: 1404ac1000018

Gateway: 1404ac1000018

Select a Wireless network to which the camera is to register and key in your Wi-fi network Password.

Register a camera

Cameras

Your gateways: 1404ac1000018

online

offline

pending status

Select wireless network to connect the camera to.

-- select wireless --

Enter wireless network password.

Password

Searching for wireless networks. Please wait.

Once the network credentials had been given, the camera will be registered.

Register a camera

Cameras

Your gateways: 1404ac1000018

online

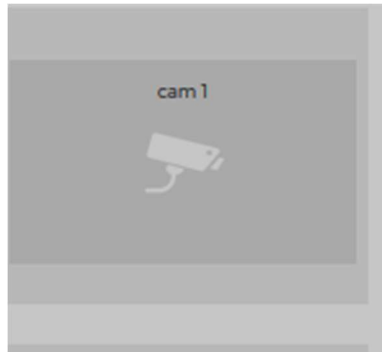
offline

pending status

✓ Successfully registered camera. If you have connected it to a wireless network, please reboot the camera.

Note! If the camera is not registered go back to installation page and try again.

Salusfin Camera | SF-81 is now successfully installed.



Camera

HD Cam camera



You are done!

Next you can install Salusfin mobile client. You can see / control all components with your mobile phone (Android/iOS)

