



Central Thermostat | SF 4022
User Guide



Table of Contents

Salusfin Central Thermostat	2
Gateway Installation.....	3
Account registration	3
Salusfin Central Relay Installation.....	4
Control relay.....	7
Specifications:	7

Salusfin Central Thermostat

Thank you for buying a Salusfin solution.

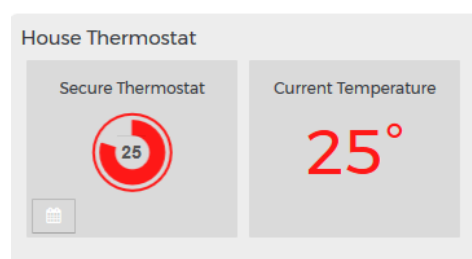
This user guide will ensure that you will have your Central Thermostat SF-4022 setup.

This Central thermostat is a Z-Wave device which lets you control the heating locally or remotely using your Salusfin solution.

The device is equipped with an LCD display and a manual temperature setting dial. The Secure thermostat controls room temperature according to the set target temperature, and remotely controls the Central relay switch.

In the control center, you can set up different heating modes to efficiently control heat consumption in your home, thus saving energy.

The device is powered by two AAA batteries. Low battery is reported to the gateway, which then sends a notification to mobile APP.



Gateway Installation

Please Ensure that you have configured the Gateway to your network before installing the components.

For Gateway Installation Please refer to Salusfin Gateway installation Manual.


Account registration

Navigate to Salusfin Home manger in your browser

<https://control.salusfin.com>

Enter your existing login credentials used for Gateway Installation and click **“Sign In”**

WELCOME TO THE SALUSFIN LOGIN PAGE



Login to your account

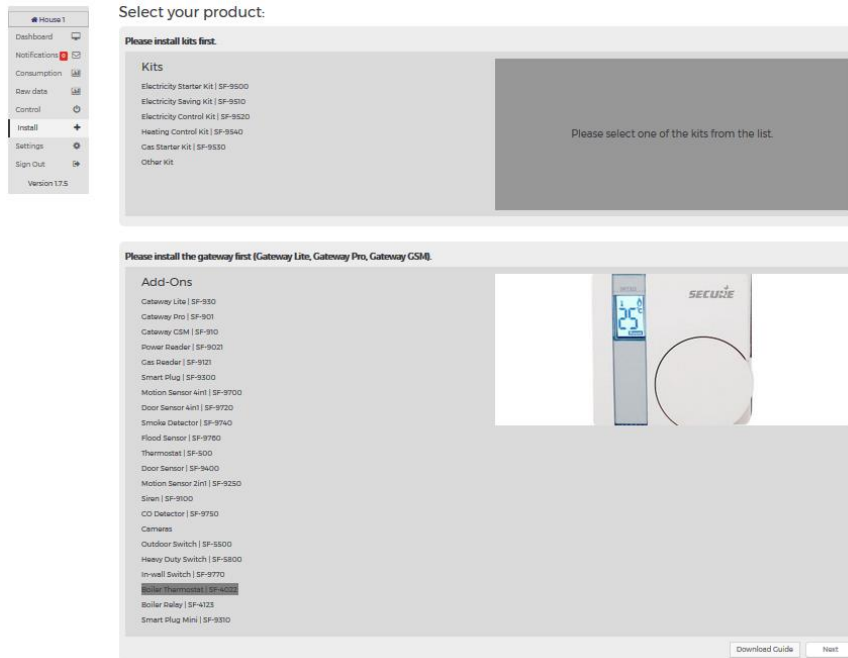
E-mail

Password

[Reset Password](#)

Salusfin Central Relay Installation

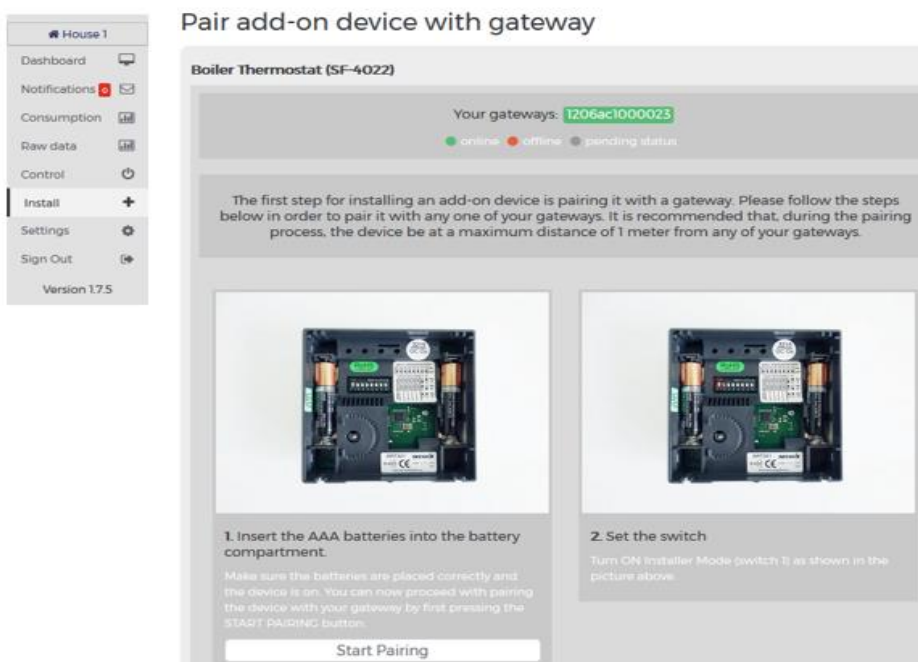
Choose Install and select “Central Thermostat | SF-4022” from the list to install.



Insert the AAA batteries into the battery compartment.

On the Central Thermostat device turn switch 1 into the position ON.

Click “Start Pairing”.

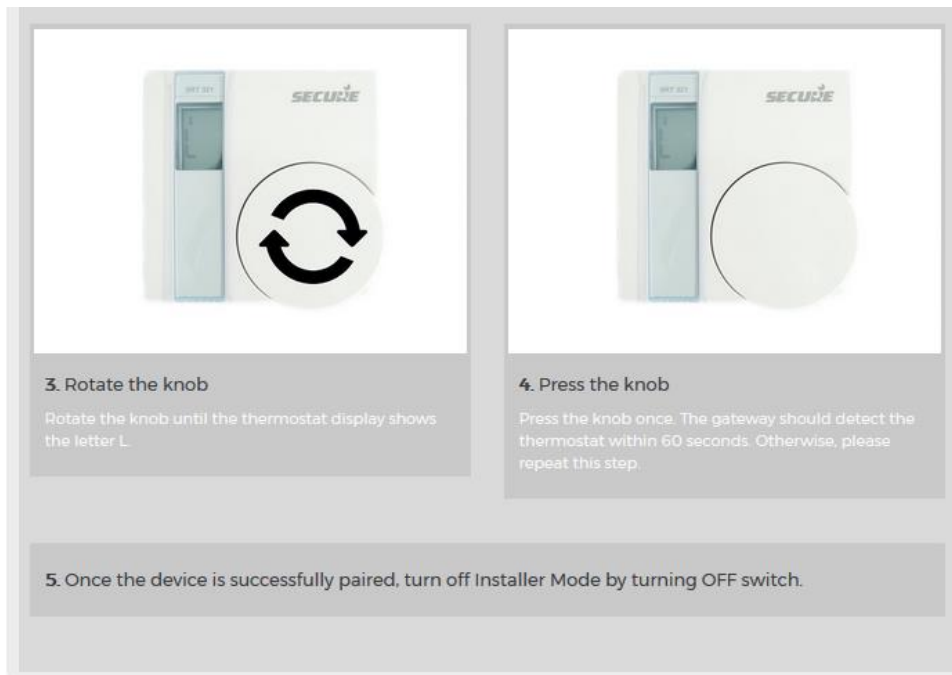


On the Central thermostat device turn switch 1 into the position ON.

Turn the wheel until the display shows L. Press the wheel once.

The device will now be paired with the gateway.

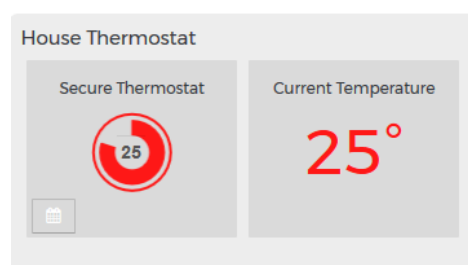
On the thermostat display you should see the set temperature and after pushing the wheel the room temperature.



Note! If the sensor is not recognized within two minutes go back to installation page and try again.

Turn off the installer mode on the device once the installation is done.

On successful installation, the power consumption on dashboard will be displayed.



House 1

- Dashboard
- Notifications
- Consumption
- Raw data
- Control
- Install
- Settings
- Sign Out

Version 1.7.5

My dashboard

🔒 +Add

Behaviour overview

- Daily average: 0.00 EUR
- Monthly average: 0.00 EUR
- Yearly average: 0.00 EUR
- Peak: 0.00 EUR

Daily consumption

TODAY YESTERDAY AVERAGE

Cost of electricity

Money spent on electricity

Today (EUR) 0.00 EUR	Weekly (EUR) Not enough data
-------------------------	---------------------------------

Money spent on standby and passive electricity consumption

EUR per day Not enough data	EUR per year Not enough data
--------------------------------	---------------------------------

Budget wheel

Control relay

Central Relay |SF 4123

User Manual



Salusfin Control Relay is a Z-Wave relay switch for e.g. heating system boilers with a maximum load of 3A/230V.

The device is controlled using two buttons and LED indicators. Control Relay can also be controlled remotely through the [Salusfin control centre](#) which activates or deactivates the switch based on thermostat signals.

You can thus control the heating at your home, office or any other premises over the Internet using a PC, tablet or mobile phone.

You need to have an certified electrician to install the Control Relay to your heating system.

You can install the Control relay to your gateway on a similar way as you installed the Central Thermostat once it is powered up.

Specifications:

The device is controlled using two buttons and LED indicators

Remote control from a PC, tablet or mobile phone

Maximum load: 3A/230V

Protection class: IP30

Dimensions: 86 mm x 86 mm x 36.25 mm

You are done!

Next you can install Salusfin mobile client. You can see / control all components with your mobile phone (Android/iOS)

